

Description

- Q series single pressure controls can be not only used in fluoridated refrigerant, but also in the air and liquid(allowed liquid temp. -20 to 120°C)
- Ambient working temp: -20°C~70°C
- Adjustable range and differential settings
- Renovated SPDT micro-switch ensures the reliable switch function
- Flexible mounting bracket suits various kinds of application
- Upper lid is optional (IP44)
- Various connections are available on request
- Automatic and manual reset version
- The material of bellows is copper and pressure interface is brass
- Several models available in drip-proof enclosure for marine applications or in explosion-proof enclosure for special applications
- CE approval



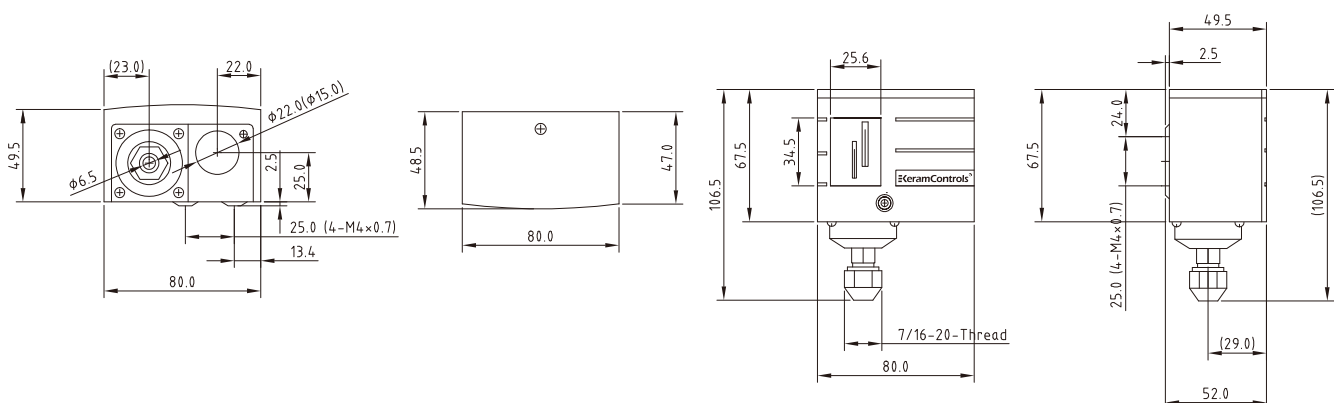
Technical Data

| Model | Range(Bar) | | Differential(Bar) | | Factory Setting(Bar) | | Max. Bellows Pressure(Bar) |
|-------|------------|------|-------------------|------|----------------------|--------------|----------------------------|
| | Min. | Max. | Min. | Max. | OFF | ON | |
| Q3 | -0.5 | 3 | 0.35 | 1.5 | 2 | 1 | 16.5 |
| Q6 | -0.5 | 6 | 0.6 | 4 | 3 | 2 | 16.5 |
| Q6M | -0.5 | 6 | ≤1 | | 3 | Manual Reset | 16.5 |
| Q10 | 1 | 10 | 1 | 3 | 6 | 5 | 16.5 |
| Q16 | 5 | 16 | 1 | 4 | 10 | 8 | 33 |
| Q20 | 5 | 20 | 2 | 5 | 16 | 3 | 33 |
| Q30D | 5 | 30 | 3 | 10 | 20 | 15 | 33 |
| Q30 | 6 | 30 | 3-5(Fixed) | | 20 | 15-17 | 33 |
| Q30M | 6 | 30 | ≤4 | | 20 | Manual Reset | 33 |

Note:

Calibration unit on scale plate with "bar" & "psig", could be revised into "Mpa"& "kgf/cm2" if required by customers.
Connections could have selections as British Flare (E), solder (C) and capillary (S).

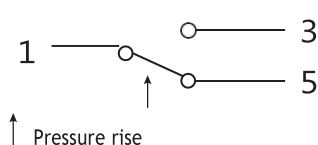
Dimensions (mm)



Electric Rating

| Rated Voltage(V) | | 125V | 250V | 24V |
|-----------------------|-------------------|------|------|-----|
| Rated Amps(A) | | AC | AC | DC |
| Non-Inductive Current | | 20A | 10A | 10A |
| Inductive Current | Full Load Current | 15A | 8A | 8A |
| | Locked Roter | 72A | | 64A |

Electric wiring

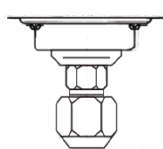


| | |
|---|----------------------------|
| 1 | Common Terminal |
| 3 | Close on,Pressure Decrease |
| 5 | Close on,Pressure Increase |

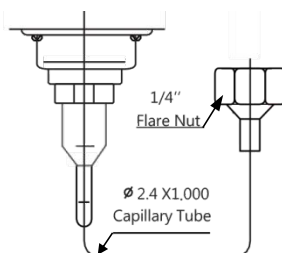
Connection & Installation



1/4" BSP CONNECTION



SAE 1/4" Flare Nut
7/16"-20UNF



Mounting Plate

