

### Description

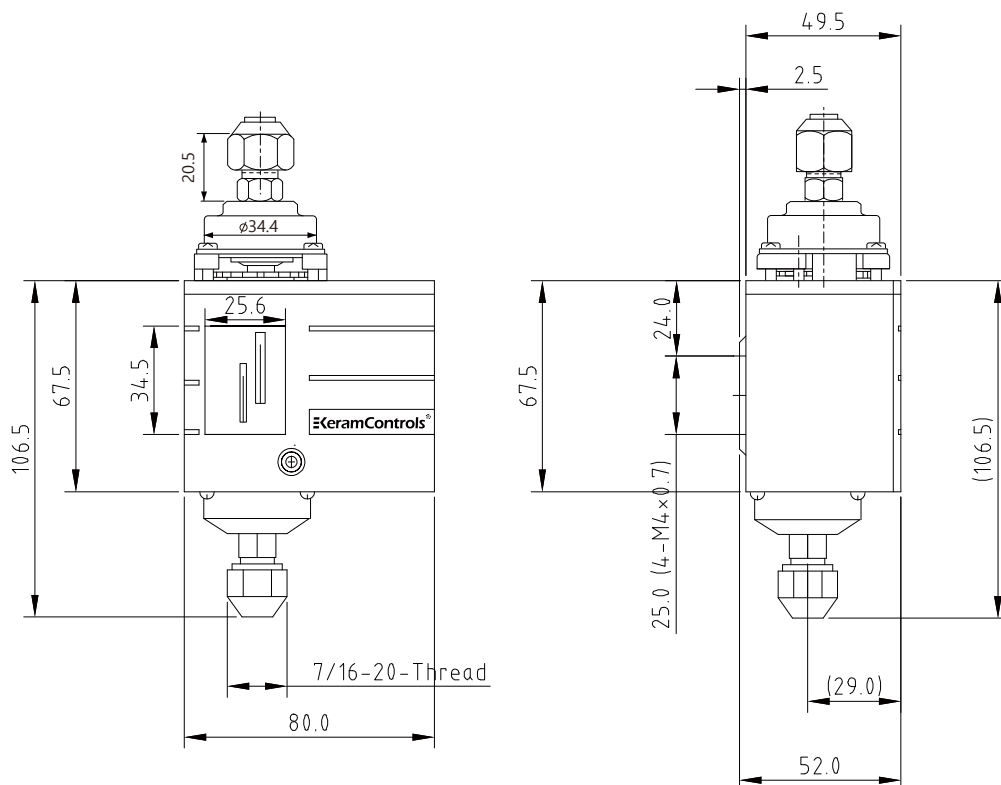
- QYD series differential pressure switch is designed to prove flow through pumps
- Ambient working temp: -20°C~70°C
- Renovated SPDT micro-switch ensure the reliable switch function
- Used in fluoridated refrigerant, but also in air and liquid (-20 to 120°C)
- Flexible mounting bracket suits various kinds of application
- Various connections are available on request
- IP33 rating
- CE approval



### Model Specification

Model	Differential(Bar)		Factory Setting(Bar)	Max Working pressure(Bar)
	Min	Max		
QYD2C	0.5	2	0.5	12
QYD4C	0.5	3.5	1	12
QYD4CH	0.5	3.5	1	30
QYD6CH	1	6	6	30
QYD4C/B	0.3	4	0.3	17

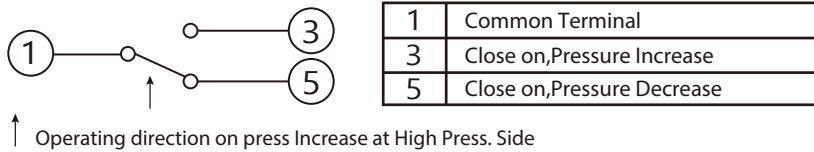
### Dimensions (mm)



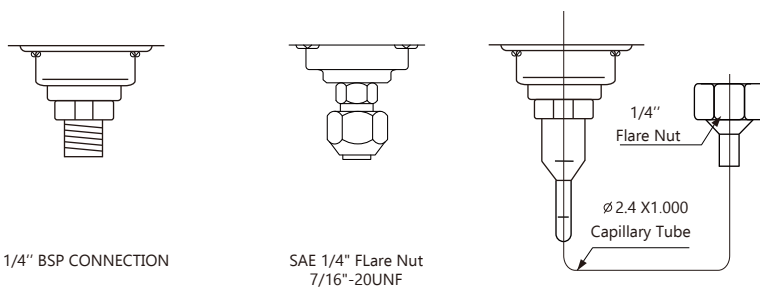
### Electric Rating

Rated Voltage(V)		125V AC	250V AC
Rated Amps(A)			
Non-Inductive Current		20A	10A
Inductive Current	Full Load Current	15A	8A
	Locked Roter	72A	

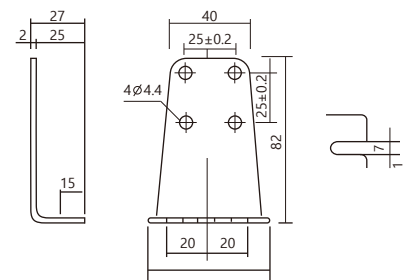
### Contact Function



### Connection & Installation



### Mounting Plate



### Operating Instruction

1. The new outer cover,two fingers pinch both sides of the plastic lid,open the outer cover can be pumped out;
2. To be installed in the pipe,must use two wrenches and twist tight;
3. Do not install the controller over electric rating of the device.