

### Description

The KFS2 paddle flow switch is made of brass or stainless steel. It offers a unique design of compact size, excellent performance, cost-effective and environmental protection. Compared with traditional target paddle flow switch, its performance is higher. It adopts plug-in installation, mechanical type and magnetic switch.

### Features

- Low pressure loss
- Good repeatability
- Dirt resistant
- Hermetic separation of electrical and hydraulic components
- No bellows
- Corrosion resistant

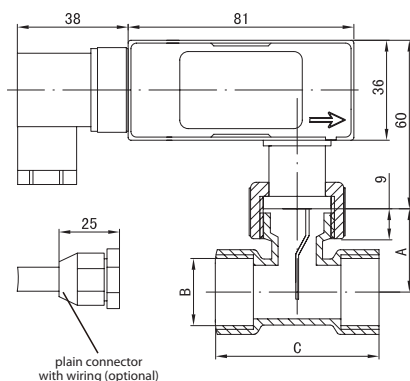
### Applications

It is mainly applicable to industrial automation/mechanical equipment/air compressing industry/refrigeration and air-conditioner. It can normally work in sewage discharging system for its hermetic separation of electrical and hydraulic components.

### Technical specification

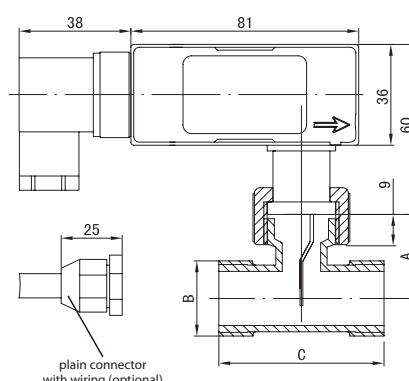
Max.voltage	250VAC(no status light ) 24VDC±10%(with status light)
Max. current	3A
Mode of connection	DI 43650A connector/direct connect for optional
Output	SPST micro-switch, one or two output for optional, optional status light
Pressure	25bar, custom-made
Average press loss	0.01bar at Q.max
Temperature	-10~85°C
Protection class	IP65
Material	Body: nickel plated brass, Paddle: stainless steel, Seal: NBR, Electrical shell: ABS
Materring substance	Water, gas, oil

### Dimension (with T-fitting)(mm)



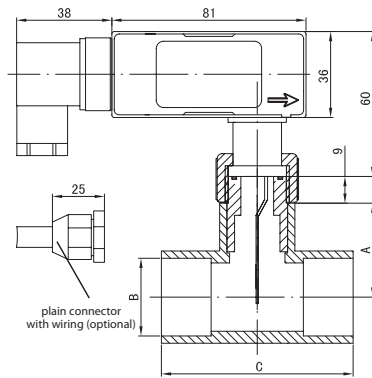
KFS2..BA with female thread T-fitting

Model	A	B	C
KFS2020BA	28	3/4"	58
KFS2025BA	34	1"	58
KFS2032BA	34	1 1/4"	72
KFS2040BA	34	1 1/2"	72
KFS2050BA	46	2"	72



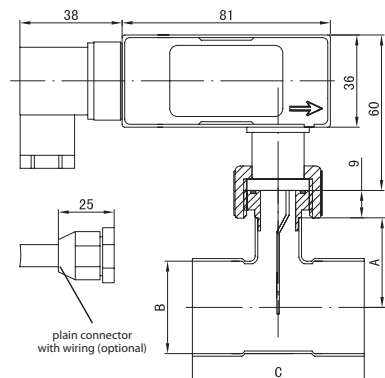
KFS2..BC with male thread T-fitting

Model	A	B	C
KFS2020BC	28	3/4"	58
KFS2025BC	34	1"	58
KFS2032BC	34	1 1/4"	68



KFS2..BA with female thread T-fitting

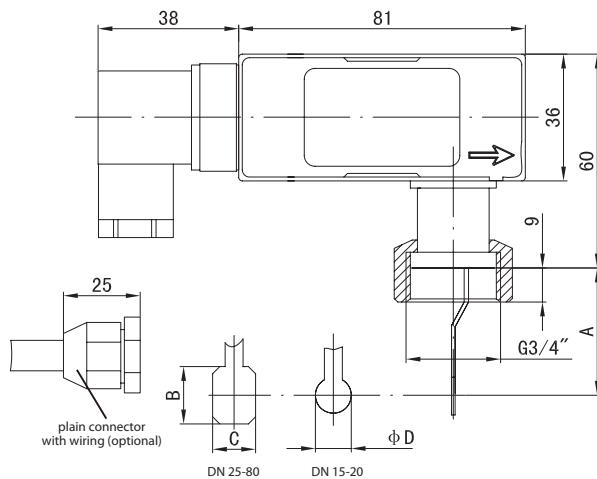
Model	A	B	C
KFS2025BH	34.5	Φ25	68
KFS2032BH	38.5	Φ32	80
KFS2040BH	42	Φ40	90
KFS2050BH	48	Φ50	98.5
KFS2063BH	55	Φ63	110



KFS2..BC with male thread T-fitting

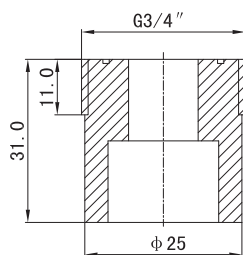
Model	A	B	C
KFS2022BG	25	Φ22.3	55
KFS2025BG	27.5	Φ25.5	53
KFS2028BG	28.5	Φ28.8	56.7
KFS2032BG	32.8	Φ32.2	63.7
KFS2035BG	34.4	Φ35.1	66
KFS2042BG	35.4	Φ42.2	81.3

### ≡ Dimension (No T-fitting)(mm)

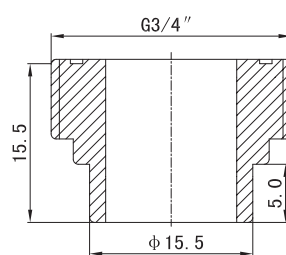


Model	A	B	C	D
KFS2020BD/F(20)	20	--	--	10
KFS2020BD/F(23)	24	--	--	10
KFS2020BD/F(24)	24	13.5	12	--
KFS2020BD/F(25)	26	16	12	--
KFS2020BD/F(26)	28	--	--	10
KFS2020BD/F(27)	28	13.5	12	--
KFS2020BD/F(28)	28	19	12	--
KFS2020BD/F(29)	30	16	12	--
KFS2020BD/F(30)	30	22	16	--
KFS2020BD/F(31)	32	--	--	10
KFS2020BD/F(32)	32	19	12	--
KFS2020BD/F(33)	34	13.5	12	--
KFS2020BD/F(34)	34	16	12	--
KFS2020BD/F(35)	34	22	16	--
KFS2020BD/F(36)	36	13.5	12	--
KFS2020BD/F(37)	36	19	12	--
KFS2020BD/F(38)	38	16	12	--
KFS2020BD/F(39)	38	22	16	--
KFS2020BD/F(40)	40	19	12	--
KFS2020BD/F(42)	42	22	16	--

### Optional connector



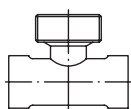
PVC male thread adapter



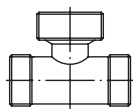
### Welding brass connector with copper T-fitting

Note:() indicates paddle length.

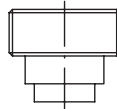
### Optional T-fitting and connector



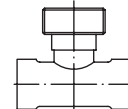
Female thread T-fitting  
Brass  
Stainless steel



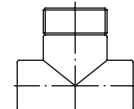
Male thread T-fitting  
Brass  
Stainless steel



Welding/soldering glue socket  
Brass  
Stainless steel  
PVC



Welding T-fitting  
Red copper



Glue T-fitting  
PVC

## ≡ Nomenclature

KFS2	008	B	A	1A	010	Specification
KFS2						KFS Paddle flow switch
	008					Nominal size: G1/4"(T-fitting size)
	010					Nominal size: G3/8"(T-fitting size)
	015					Nominal size: G1/2"(T-fitting size)
	020					Nominal size: G3/4"(T-fitting size)
	025					Nominal size: G1"(T-fitting size)
	032					Nominal size: G1-3/4" (T-fitting size)
	040					Nominal size: G1-1/2"(T-fitting size)
	...					...
		A				Body material: H59 brass
		B				Body material: Nickel plated brass
		P				Body material: engineering plastic
		S				Body material: stainless steel
			A			Mode of connection: Female thread T-fitting
			C			Mode of connection: Male thread T-fitting
			D			Mode of connection: Welding/soldering glue connector
			E			Mode of connection: Female thread plug-in (no T-fitting), inlet thread: G3/4" and G1"
			F			Mode of connection: ale thread/ plug-in (no T-fitting), inlet thread: G3/4"
			H			Mode of connection: U-PVC plastic T-fitting
			G			Mode of connection: Red copper T-fitting
				1A		Cable: DIN 43650, the letter indicate the mode of connection,see the wiring schematic drawing
				2A		Cable: plain connector, the letter indicate the mode of connection, see the wiring schematic drawing
					1	Flow at Q.max L/min,specific data please see PARAMETERS.
					...	...

## Before you order

- 1.Please indicate flow indication, metering substance, nominal size and adjustable range with your order
- 2.For viscous liquids, please indicate viscosity, temperature and metering substance
- 3.For gaseous media, please indicate pressure(relative or absolute), temperature and metering substance