

Installation Guide

Air Differential Pressure Transmitter

Model KDP210

1.0 GENERAL INFORMATION

Every model KDP210 has been tested and calibrated before shipment.

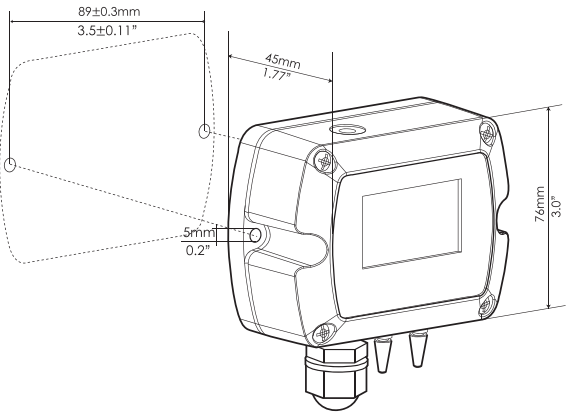
The installation guide shall be read before commissioning the equipment, which is part of the scope of supply and serves for ensuring proper handling.

2.0 TECHNICAL DATE

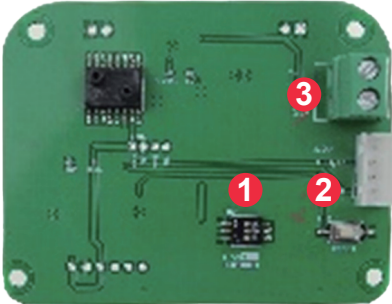
Model	KDP210
Measurement units	Pa, mmH ₂ O, mmHG, mbar
Accuracy	<±1% FS@-5 to +65°C
Response time	0.5s
Repeatbality	±0.01 % at FS / year
Resolution	0.1 Pa; 0.1 mmH ₂ O; 0.01 mbar; 0.01 mmHG
Media	Air and neutral gases
Operating temperature	-20 ... +70°C
Storage temperature	-40 ... +60°C
Power consumption	<3 W
Tolerated overpressure	×15
Power Supply	16~30VAC/DC (3 wire) / 18-30VDC (2 wire)
Output signal	4-20mA (2 wire)
	4-20mA (3 wire)
	0-5 / 0-10VDC (3 wire)
	RS-485
	Customized
Auto zero	Manual calibration
Housing material	Polycarbonate & ABS, UL94V-0
Protection class	IP65 / NEMA4
Display	Backlight LCD display
Cable Gland	M16*1.5

3.0 PRODUCT DESCRIPTION

3.1 Dimensions

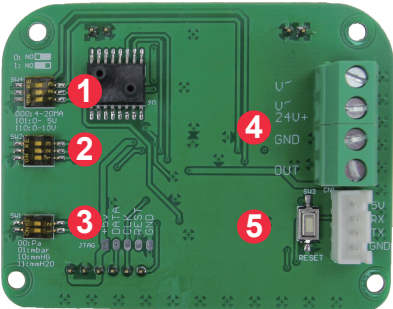


3.2 Components



- ① Switch 1: Measuring Range Adjustment
- ② Switch 2: Manual Zero-point Correction
- ③ Terminal

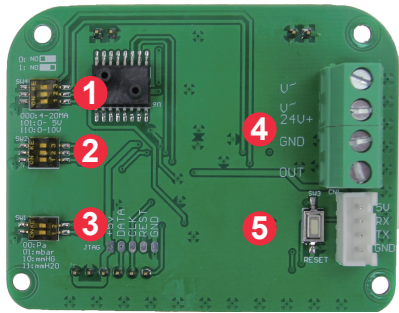
2 Wires Current Output



- ① Switch 1: Output Setting (3-wire output Model)
- ② Switch 2: Measuring Range Adjustment
- ③ Switch 3: Unit Setting
- ④ Terminal
- ⑤ Switch 4: Manual Zero-point Correction

3 Wires Current Output

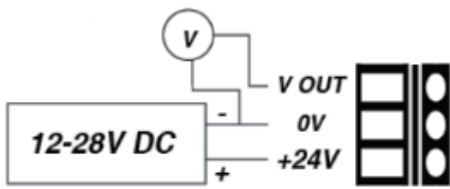
-1-



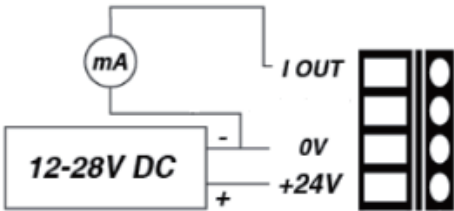
- ① Switch 1: Output Setting (3-wire output Model)
- ② Switch 2: Measuring Range Adjustment
- ③ Switch 3: Unit Setting
- ④ Terminal
- ⑤ Switch 4: Manual Zero-point Correction

3 Wires Voltage Output

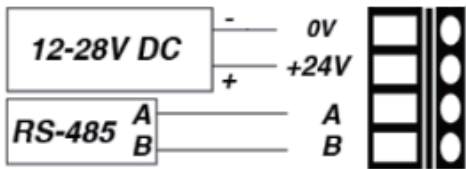
3.3 Diagram



3 Wires Voltage Output



3 Wires Current Output



RS-485 Output



2 Wires Current Output

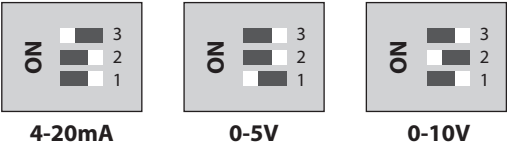
3.4 Measuring Range Adjustment (Switch2)

ON	ON	ON	ON	ON	ON	ON	ON
3	3	3	3	3	3	3	3
2	2	2	2	2	2	2	2
1	1	1	1	1	1	1	1

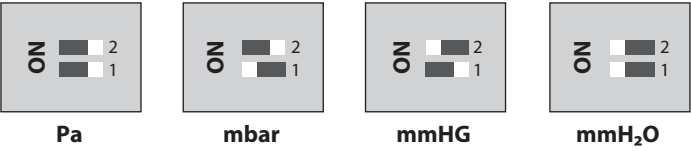
KDP210-1	0—+100	0—+75	0—+50	0—+25	-25—+25	-50—+50	-75—+75	-100—+100
KDP210-2	0—+1000	0—+750	0—+500	0—+250	-250—+250	-500—+500	-750—+750	-1000—+1000
KDP210-3	0—+2000	0—+1500	0—+1000	0—+500	-500—+500	-750—+750	-1500—+1500	-2000—+2000
KDP210-4	0—+10000	0—+7500	0—+5000	0—+2500	-2500—+2500	-5000—+5000	-7500—+7500	-10000—+10000

-2-

3.5 Output Setting (3-wire output Model) (Switch1)

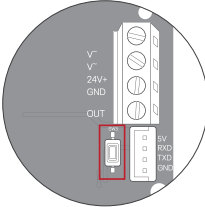


3.6 Unit Setting (Switch3)



- To configure the transmitter, it must not be energized.
- Then, you can make the settings required, with the DIP switches.
- When the transmitter is configured, you can power it up.

3.7 Manual Zero-point Correction



- In normal operation zero point correction should be executed every 12 months.
- For executing zero point correction the power supply must be connected one hour before.
- Release both connection tubes from the pressure terminals + and –
- Press and hold the button for 3 seconds.
- Reinstall the connection tubes

4.0 QUALITY ASSURANCE

The company provides guarantee for the quality of products in materials and manufacturing, and is applicable to the following conditions and scope. If the following circumstances are involved, the company shall be responsible for free maintenance or replacement of the problems caused by manufacturing.

1. The product is not used improperly, stored improperly or accidentally damaged. The user has no wrong wiring, incorrect installation or maintenance, or does not violate the instructions provided by the company to use it.

2. The product has not been repaired or replaced by the company or designated maintenance personnel.

3. After the inspection of the company, it is confirmed that the problems in product materials or manufacturing are caused by normal installation, use and maintenance.

4. Please inform us in advance and prepay the freight before the products are returned to our company.

Unless specifically stated in the product usage instruction or quality assurance or signed by authorized personnel of the company, the company's temperature and humidity transmitter products shall provide a one-year quality assurance from the date of sale.If there is any problem with the products during the warranty period, the company shall be responsible for repairing or replacing the products.If the product can not be repaired or replaced, we can see the return of the product payment.In any other case, the liability of the company is limited to the return of the payment.In no case shall the company be liable for any accident or chain loss caused by failure to fulfill the commitment or the installation of its products.No agent or person is authorized to provide any other warranties other than the above, or undertake that the company shall bear any other responsibility in connection with the sale of its products.

-3-

-4-